

# KAINANTU GOLD MINE



## **POMASI CENTRAL WORKING COMMITTEE**



P.O. BOX  
KAINANTU 443  
EASTERN HIGHLANDS PROVINCE  
Phone: (675) 71390754 / 78982490  
Email:

***“CONFIDENTIAL”***

# PBLDC



**POMASI BLUE LAKE DEVELOPMENT  
CORPORATION LTD**

**Kainantu Gold Mine Landowner Umbrella Company**

*Landowner Company of the Pomasi Landowners of Kainantu Gold Mine, Kainantu District,  
Eastern Highlands Province,  
Papua New Guinea*

***PNG IPA Registration Number: 1-143058190  
IRC TIN Number: 502951938***

## Table of Contents

COMPANY INFORMATION SHEET .....	2
Kainantu Gold Mine (KGM) Background .....	2
Landowner Groups & The Situation on the Ground .....	2
The Pomasi Landowners .....	3
Pomasi People’s Mouth Piece (CWC) & Clan Leaders Endorse & Authorize the Establishment of PBLDC ....	4
The Company’s Background and Benefit Sharing Position .....	5
Company Details .....	7
Organizational & Company Structure .....	8
Management Team .....	10
Vision .....	10
Mission .....	10
Values .....	11
Keys to Success .....	11
PBLDC Qualifies to be a Vendor for Kainantu Gold Mine .....	11
Target Business Focus .....	13
Future Plans & Outlook .....	13
The Company’s Business Relations .....	14
Contact Us .....	14
Appendix .....	16

# COMPANY INFORMATION SHEET

REF: CIS No. 01 – 01/2026

22 January 2026

## **The Kainantu Gold Mine (KGM) Background.**

The Kainantu Gold Mine is located approximately 110 km east of the Provincial Capital of Goroka, and about 30 km north of Kainantu Town. From the Port City of Lae, it is approximately 190 km west-northwest, and turning south for about 8 km at Gusap Airfield.

KGM is a high-grade, low cost underground mine operated by K92 Mining Inc., a Toronto listed Canadian company registered in PNG under Mining Lease 150 (ML 150) while the Process Plant, Offices of the operator and contractors, workshops, stores, Camp, Mess, and Tailing Storage Facility are in another location under a Lease for Mining Purposes 78 (LMP 78).

The Operator (K92 Mining Inc.) holds mineral rights and interests in the Kainantu property, which covers 836 km<sup>2</sup>. Apart from the ML 150 and LMP 78 within the Kainantu property, the Operator holds licenses to Mining Easements 80 and 81, Exploration License No. 470 (EL 470), Exploration License No. 693 (EL 693), Exploration License No. 1277 (EL 1277), and Exploration License No. 1341 (EL 1341).

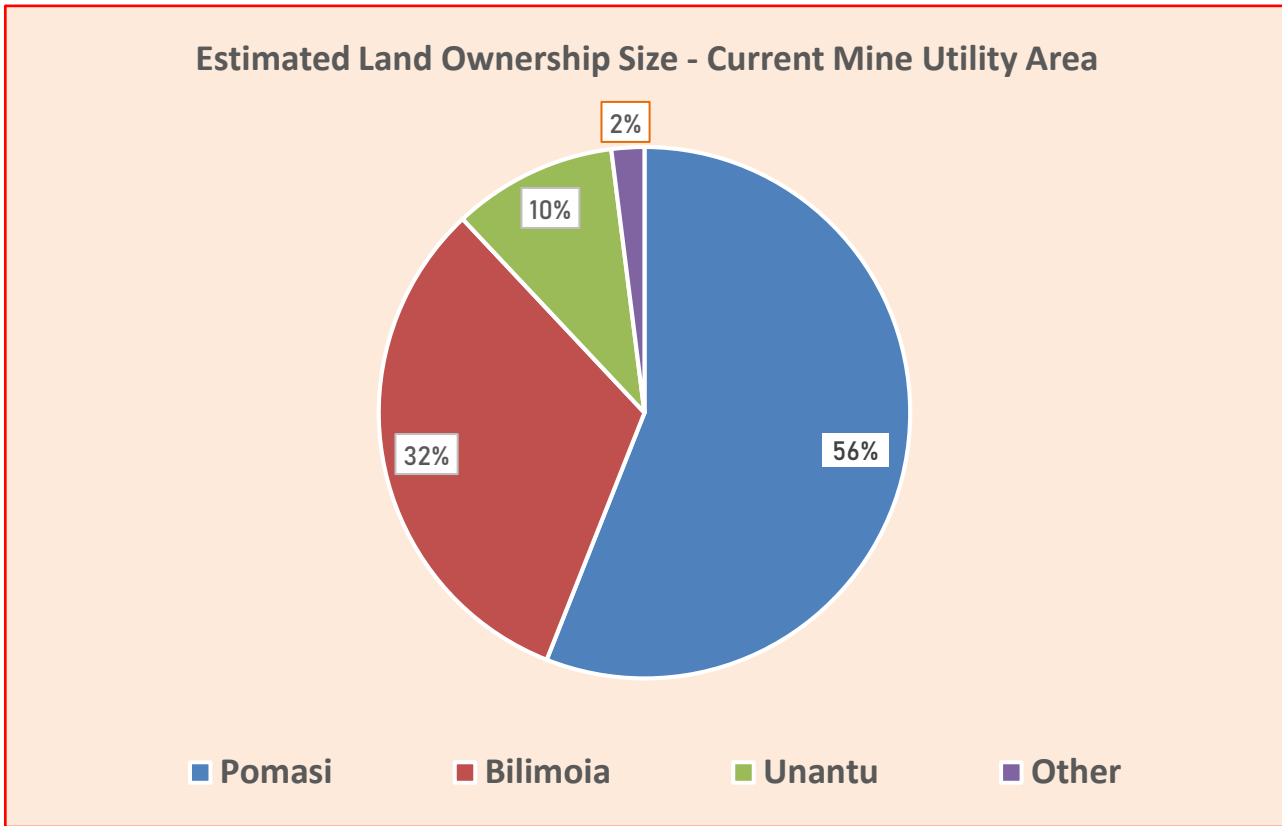
K92 Mining Inc. of Canada bought KGM from Barrick in 2012. Initially, construction of the Mine started in 2004 by the then operator, Highlands Kainantu Ltd, and production commenced in 2006 until it was sold to Barrick in 2007. Barrick then closed it in 2009. It remained closed and was later sold to K92 Mining Inc. in 2012. K92 Mining Inc. restarted production in 2014 and remains the operator up to 2025. It has made significant ore discoveries recently within the Kainantu mineral rights property and is in the process of developing and progressing these discoveries into full production by stages, pushing K92 Mining Inc. into a Tier 1 mid-tier gold producer from 2026 onwards.

## **Landowner Groups & the Situation on the Ground.**

Kainantu Mine Utility area (i.e. ML area, LMP area, ME area) covers land owned by three (3) major or key landowner groups. The mine site (ML 150) is on land owned by the Bilimoia Tribe. The Process Plant, Offices, Stores/Warehouses, Workshop, Camp, Mess, and Tailings Storage Facility are on LMP 78 and this land is about 85% owned by the Pomasi Tribe with 5% belonging to Bilimoia, and 10% belonging to Unantu Tribe. The Mining Easement (roads and other mine use segments cover Mining Easements 80 and 81 which are on land owned largely by Pomasi, with little segments by Unantu and the Markham people.

In terms of square kilometer utility coverage of K92 Mining Inc.'s "Kainantu Mineral Rights Property", the Pomasi Landowners are a major landowning group.

Refer to pie graph.



Since the development of the mine in 2003 and up to the present, the ML 150 landowners (the Bilimoia Tribe) have been given much attention and prominence, simply because they are the ore body landowners. However, in all fairness, the Pomasi are hosts of LMP 78 and the ME 80 and 81. Considering new developments in the pipeline, especially the Blue Lake discovery and other potential discoveries, there is a considerable increase in acreage under the Pomasi Tribe in the future.

### The Pomasi Landowners

The Pomasi landowner group are less prominent in the eyes of the Government and the KGM operator – K92 Mining Inc. Pomasi People have no Landowner Association entity, they have no umbrella company, or an investment company to progress their mine benefits, not even a contract per se. From another angle, one could draw this conclusion. Not much attention is given to them, although they happen to be one of the landowner groups on which a huge part of their land is covered under license for mine use purposes and operations. They are less vocal and peaceful people and mind their own business.

They have missed out so much in mine spin-off business participation either out of their own ignorance or out of deliberate negligence and omission by the Government and its agents or the operator and its agents. In any case, the situation has allowed

the Pomasi Landowners to be marginalized for a long time since 2003 when the initial MOA came into effect. That is well over 20 years now.

Anyway, the Pomasi Landowners have four (4) major clans – the Kamanoantu, the Punanu, the Noru and the Afuantu. Within these four (4) clans, they have seventeen (17) sub-clans with a population of almost 4,000 people covering the land bordering the Markham, Kainantu and Kafe or Henganofi people on the west of the mine site.

This large packet of land and population host Kainantu Gold Mine as genuine landowners who have yet to see meaningful participation in spin-off business opportunities.

## **Pomasi People’s Mouth Piece (CWC) & Clan Leaders Endorse & Authorize the Establishment of PBLDC**

The Pomasi people have this mechanism like a quasi-landowner association type Committee (**The Pomasi Central Working Committee – commonly referred to as CWC**) which was established by K92 Mining Inc.’s Management to identify, endorse and approve any Pomasi person or Business interested in participating in Mine Spin-off Businesses. The CWC arrangement serves a critical purpose in which it gives the Pomasi People the ‘mouth piece’ and therefore recognition to participate in mine spin-off businesses. This CWC arrangement is applicable for individuals and entities to get smaller contracts. The bigger contracts are better suited to a Landowner Association type group with more negotiation powers and ability to provide wider benefit sharing opportunities.

In the absence of a Landowner Association for the Pomasi Tribe, an alternative such as an umbrella company with the right plans for wider benefits sharing can fill in the void perfectly. This is where Pomasi Blue Lake Development Corporation Ltd (PBLDC) comes in. PBLDC was endorsed or approved and given authorization to be established by the Executives of CWC and the four (4) Clan Leaders of Pomasi Tribe which are on the company records for confirmation.

**Documented evidence shows that the CWC Executives and four (4) Clan Leaders gave their full consent in July 2025 for Mr. Aro Kake and his team by endorsing his idea and authorizing the company’s establishment. It is unfortunate that some of these leaders when asked to be named in the company’s ownership and directorship, they declined and didn’t want to be a part of the company except for one or two individuals. However, the Endorsement and Approval at the concept phase of starting this company (the initial company name suggested was Pomasi Numpari Holdings Ltd) and coming from what is officially and technically without any argument whatsoever, the Voice of the Pomasi People, is recognition and proof enough that PBLDC is the duly nominated Pomasi People’s Umbrella Company. The Executives of CWC and Clan Leaders must be commended for this.** Note: Copies of Authorization and Endorsement from CWC and Clan Leaders are attached in Appendix for reference.

With the entrance of PBLDC, the playing field now changes and dimensions shifted. The CWC and the Pomasi Tribe's four (4) Clan Leaders are fully behind PBLDC and they have every reason to

## The Company's Background and Benefits Sharing Position.

Pomasi Blue Lake Development Corporation Ltd is an initiative of the founder, Mr. Aro Kake. He is so concerned about his Pomasi People to fight for their right to benefit out of the mine even when they cannot help empower themselves. He says he has seen so many missed opportunities for his people as landowners since the mine came into operation.

To capture such opportunities, he has tirelessly held several meetings and discussions with his Pomasi Tribesman since 2015, to come together to form an umbrella company to take on mine contracts and actively participate in mine spin-off businesses. Sadly, NOT many people were keen to be involved in forming an umbrella company with him. Even though there was lack of interest in the formation of the company, Mr. Aro Kake was driven by his life-long vision – to establish a vehicle in which his people's lives are developed economically and socially through mine spin-off businesses. The result: POMASI BLUE LAKE DEVELOPMENT CORPORATION (PBLDC) LTD

The establishment of the Company (PBLDC) has allowed it to develop two very important Corporate Documents. The first is the “**Pomasi People's Business & Social Development Framework (PPBSDF)**”. This Document is designed to serve as the overarching Reference Source for the Pomasi People's business, social and infrastructure development initiatives and plans. The other is the “**Business Plan (BP)**” of PBLDC. This Document is the Operational bible of the company and captures all its business plans. Both of these Documents are the blue prints for the Pomasi People's overall business and social development aspirations and ideas. They shall be made available upon request.

Mr. Kake's vision for PBLDC was for it to become the vehicle to truly develop his people – the Pomasi Tribe of Kainantu Gold Mine was captured in the PPBSDF but here are the details of the concept of wider benefit sharing.

### **(1). To use PBLDC as a platform to establish Clan Investment Companies (CICs) for the 4 x major Clans of Pomasi in order for them to:**

- (a) Get Sub-contracts under PBLDC
- (b) Participate in Social and Infrastructure Projects and Programs (SIPP) within the Kainantu mineral rights property of K92 Mining Inc.

The catch in this CIC concept is: These CICs are independent from PBLDC and can only qualify to get assistance from PBLDC if they provide a good financial performance report to the Board of PBLDC so that they can be continued to be supported. No good financial report, no support from PBLDC.

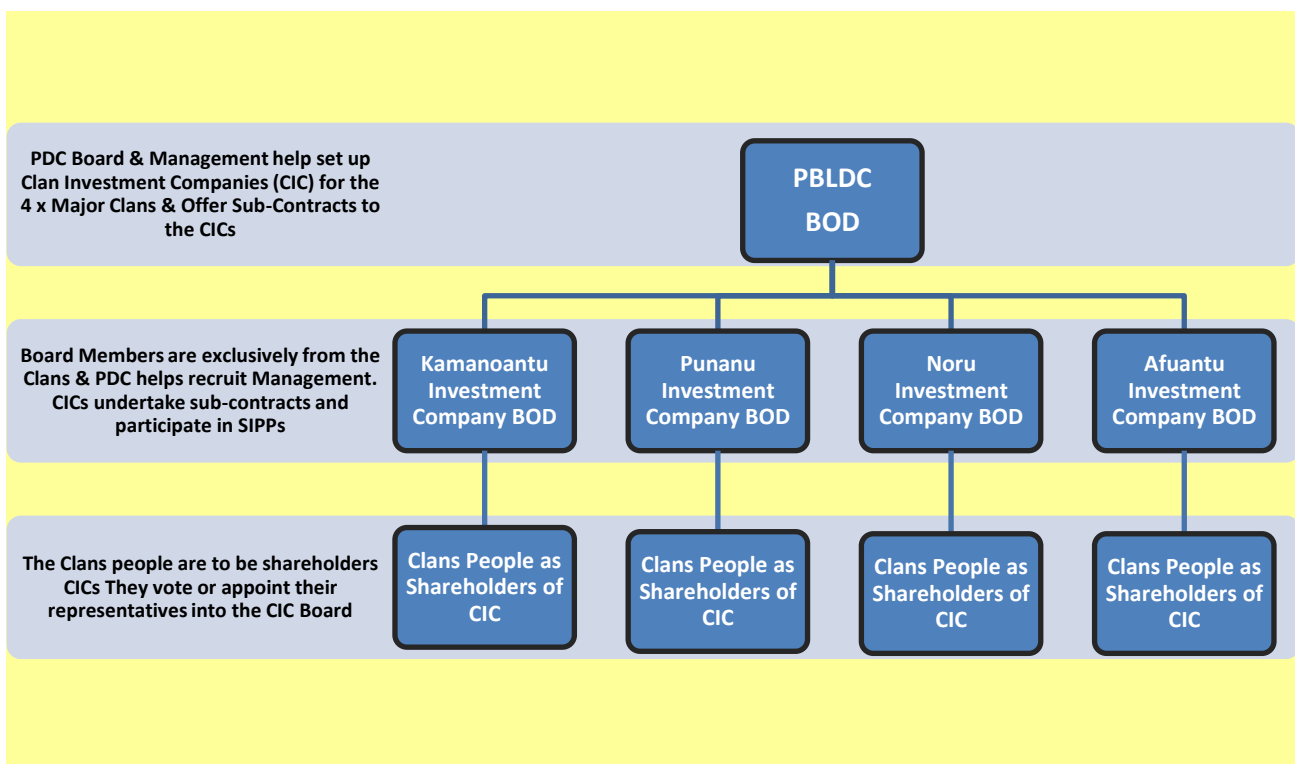
### **(2). To use portions of PBLDC profits to establish a Foundation which will be**

**the entity to identify and manage Social Infrastructure Projects & Programs (SIPPs) engaging the CICs as contractors.**

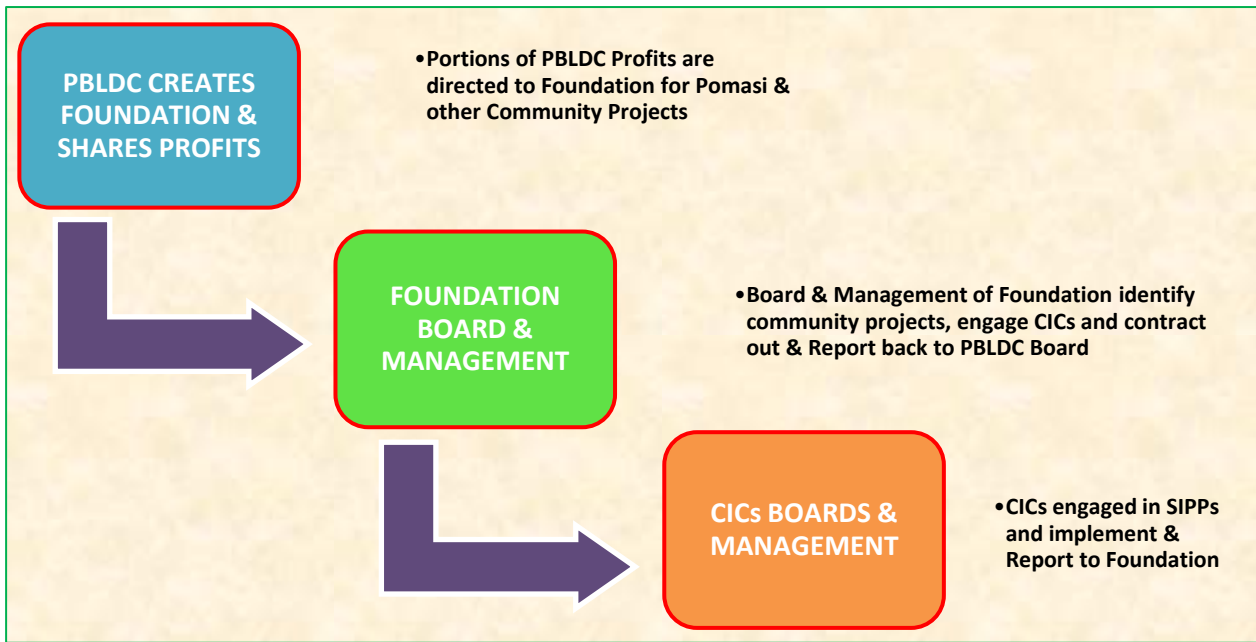
The Foundation is to be owned by PBLDC to maintain accountability and sustainability.

See diagrams below to better understand this visionary concept of Wider Benefit Sharing and Community Service approach of Mr. Aro Kake through PBLDC.

**(1) PBLDC’s “Umbrella” Company Structure for Wider Benefit Sharing through CICs.**



**(2) PBLDC’s “Umbrella” Structure for Wider Community Service through SIPP**



## Company Details

Apart from the very comprehensive wider benefit sharing business, social and infrastructure development framework developed by the company as highlighted above, the company has a Constitution that is registered, A Governance Charter and Code of Governance. In addition to the PPBSDF and BP as well as this CIS, it has other Corporate Documents still in development.

It has a vibrant and credible young Board of Directors who were appointed by Mr, Kake from among his Tribe and Supporters. Mr. Kake holds 65 % share as Trustee Shareholder for his people and has offered 35% shareholding to mission work of the Church supporting God’s Kingdom.

Summary of the company’s details below

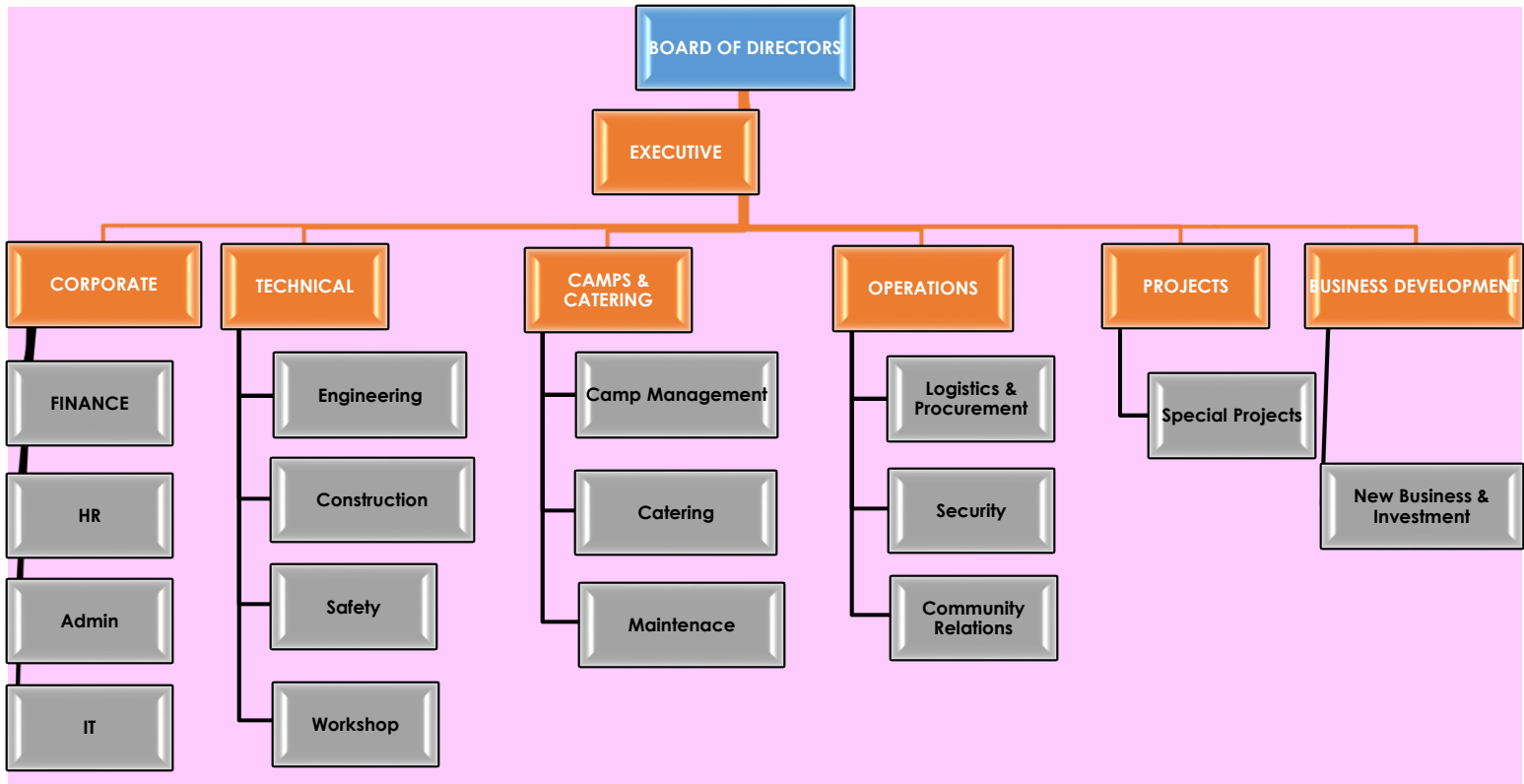
- Registered Name: Pomasi Blue Lake Development Corporation Limited, or commonly referred to as PBLDC Ltd
- Nature of Business: Lanco Company designated to take on major contracts in the mine in all facets of mining related spin-off businesses on its own or through its JV arrangements.
- Date of Incorporation: 24 September, 2025
- IPA Company No: 1-143058190

IRC TIN No:	502951938
Ownership:	Wholly owned by Mr. Aro Kake as Founder & Trustee on behalf of his Pomasi Tribal Landowners of Kainantu Gold Mine.
Key Person:	Mr. Aro Kake – Founder/Chairman of the Board
Contact Person:	Mr. John B. Konga, MBE, MBA – Manager on site
Place of Business:	Barandane Village, Kainantu Mine site, Kainantu District, EHP, PNG
Postal Address:	P.O Box 5013, LAE, Morobe Province, Papua New Guinea
Contact Details:	Phone: (675) 7294 2331 Mobile: (675) 7337 4499 or 7852 2253
E-mail:	<a href="mailto:info@pbldc.com.pg">info@pbldc.com.pg</a> or <a href="mailto:exec.mgt@pbldc.com.pg">exec.mgt@pbldc.com.pg</a>
Website:	<a href="http://www.pbldc.com.pg">www.pbldc.com.pg</a> or visit our webpages on <a href="http://www.Linkedin.com">www.Linkedin.com</a> and <a href="http://www.Facebook.com">www.Facebook.com</a>
Bankers:	Bank South Pacific & Tisa Bank
Legal Advisors:	Myles Legal Services

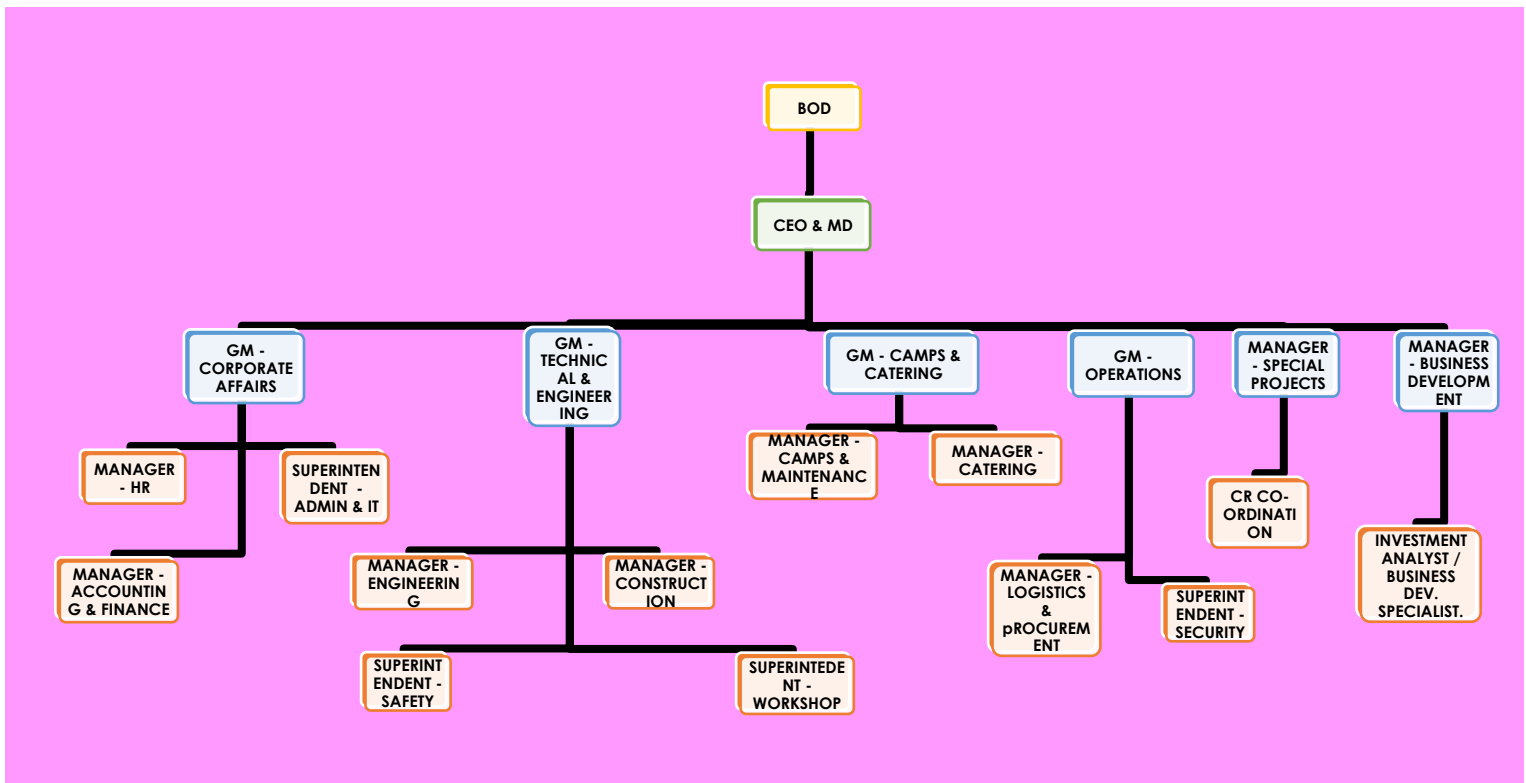
## Organizational & Company Structure

The Organizational and Company structures are presented below in the respective diagrams. They are self-explanatory.

### 1. Organizational Structure



## 2. Company Structure



## Management Team

The Board has put together a Management Team of professionals with mining and industry experience to manage the operations of the company at the start. This Management Team is in place as part of the Start-Up Phase of the Company under the Organizational Structure approved by the Board of which it will transition in the first four (4) years as detailed in the Business Plan.

The Table below provides the details of the PBLDC Management Team as at January, 2026.

### PBLDC MANAGEMENT TEAM AS AT JAN, 2026

File No.	Name	Position	Background	Qualification	Industry Experience	Notes
PBLDCM 01	John B. Konga, MBE, MBA	Manager	Business Management	MBA	30 Years in LO Companies in major PNG Mines	Resume on file
PBLDCM 02	Barry Klapui	Operations Supervisor	Technical & Engineering	Diploma & Certificate	20 years in Mining & Resources Industry	Resume on file
PBLDCM 03	Janet Diwik	Accounts Supervisor	Accounting/Finance or Business Administration	Certificate / Diploma	10 years in Construction Industry	Resume on file
PBLDCM 04	Betty Konga	HR & Admin Supervisor	Business Administration or HR	Certificate / Diploma	20 plus years Commercial Industry	Resume on file
PBLDCM 05	Ruben Bota	Safety Lead	OHSE Background	Diploma / Certificate	15 years plus including mining industry	Resume on file
PBLDCM 06	Emmanuel Rhomb	IT Lead	Computer Science	Degree	3 years industry experience	Resume on file

## Vision

The Vision Statement of PBLDC is: **“To Champion Equitable, Active & Lasting Benefits for Kainantu Resource Owners”**

This statement reflects on the aspiration of the founder and the hopes of all the Pomasi People together with other landowner groups to find ways to maximise benefit in a sustainable manner.

## Mission

The Mission Statement of PBLDC is: **“To Ensure that Resource Wealth is used to**

## play a critical role in the establishment of Strong, Vibrant and Self-Sustaining Communities within and around K92 Mining Project”

This mission statement establishes the fundamental relationship between PBLDC, the Pomasi People and all surrounding communities.

## Values

The company’s Management Team believes and is focused in building a Corporate Culture that focuses on **Teamwork, Safety, Innovation, Hard work and Reward.**

This becomes the Value Proposition of the Company.

## Keys to Success

If there was anything to get the formula right, it would be this: **“DO THE SMALL THINGS RIGHT & DO IT RIGHT FIRST TIME” – How does the company expect to achieve this?**

**PBLDC’s MOTTO:** The Company’s motto is a very simple formula. Every morning at Tool Box Meetings each day, every employee and associate is reminded to know this formula and follow through with each task. **STUDY, PLAN and ACTION.**

At induction, every employee will be taught this motto to practise each day with every single task. **First spend 2 – 3 Minutes to Study the task (i.e. to understand what is to be done and why). Next, spend 10 – 15 Minutes to Plan (i.e. to establish the scope of the task, what resources will be required, who else will be involved, the time it will take, what the risks are and how to manage them, what other options are available, etc.). Finally, spend 30 Seconds to 1 Minute to pause and reflect before Action. ONLY When Steps 1 & 2 are satisfied, the task must be carried out.** The first 15 Minutes before each task is devoted to *STUDY, PLAN & ACTION*. Team Leaders will be challenged to follow through.

## PBLDC Qualifies to be a Vendor for Kainantu Gold Mine

There are several factors PBLDC wants to highlight for the benefit of the readers of this document to take note and remember so that PBLDC is not disadvantaged in any way. Here is a list of factors that establish PBLDC as a legitimate landowner company and truly qualifies to be a vendor to K92 Mining Inc. the operator of Kainantu Gold Mine.

1. It is a company owned by a Chief of the Pomasi Tribe representing the interests of almost 4,000 Pomasi Landowners, a key but mostly unrecognized landowner

group of Kainantu Gold Mine since 2014. It is the Pomasi Landowners avenue for fair mine spin-off business participation.

2. It is endorsed by the Pomasi Central Working Committee (CWC), the body established by the Operator to facilitate Pomasi Landowner business interests and authorized by its four (4) Clan Leaders giving it the legitimacy as the duly nominated Pomasi Landowners' Umbrella Company.
3. It has developed a detailed structure in the **Pomasi People's Business & Social Development Framework (PPBSDF)** for Wider Benefit Sharing and Community Service which is second to none among the landowner businesses in Kainantu Mine to date through the concepts of establishing CICs and the Foundation for the SIPPs. It is fitting to be the Pomasi People's Umbrella Company.
4. It's setup fulfills the requirements of the Governing Laws of the Independent State of Papua New Guinea (the Company Act 1997, the Companies (Amendment) Act 2014, the Mining Act 1992, the Mining (Amendment) Act 2020), the Employment Act 1978 and other and regulatory requirements such as the EITI Principles, the National Content Plan of the PNG National Government, including the SLO - Social License to Operate. Hopefully, the terms and conditions of the existing MOA or what is now called Community Development Agreement (CDA) should also give backup support to the setup of PBLDC.
5. It has developed the expected critical documents required under the current PNG Mining Industry vendor qualification criterion although not essential.
  - (a) **PBLDC Constitution** - A document required under the PNG Companies (Amendment) Act 2014 has been approved by the Board of Directors and registered with IPA.
  - (b) **Governance Charter** - A document also required under the PNG Companies (Amendment) Act 2014 was designed for the Board of Directors of PBLDC outlining their roles and responsibilities as Board Members. It is the Governance Charter for PBLDC.
  - (c) **PBLDC Business Plan** - A vital business document outlining crucial information for the Company from Start-up to the Take-off Phases, identifies the funding sources and business partners to provide the required and necessary financial support and advice, the risks and mitigation plan and so on.
  - (d) **Company Information Sheet** - Usually called the Company Profile but here, PBLDC has added more context and structure to give a holistic presentation of the entire Kainantu Gold Mine operation. It is a vital business document to provide background and company details to all interested stakeholders and clients in order to do business. (NOTE: See Disclaimer)
6. It has developed a comprehensive training plan to train all locals to be engaged in the mine according to industry standards and certifications so that it supports the operations of K92 Mining Inc. going forward saving time, money and integrity. This Plan is explicitly captured in the **Pomasi People's Business**

## & Social Development Framework (PPBSDF)

These six (6) qualities should fulfil the basic requirements for PBLDC to be considered an acceptable vendor by K92 Mining Inc. in which it should feel safe to work with.

### Target Business Focus

The Board and management have identified certain businesses to participate in the mine spin-off opportunities from the start and going on right throughout and these will be some of the core businesses that the company will focus on and to set targets in these business contracts.

1. Labour Hire & Recruitment
2. Vehicle and Machinery Hire
3. Logistics & Procurement
4. Camps and Catering
5. Construction (Building and Civil)
6. Engineering and Mine Services
7. Security
8. Others

### Future Plans & Outlook

The future of this company is focused on three (3) facets:

#### A. The Immediate Future (Year of Incorporation – end of Year 1)

- Establish Itself and Seek Start-up funding, Secure Essential Contracts,
- Establish JV's where appropriate,
- Recruitment, Office Sites, Equipment, Logistics, etc.
- Build & Maintain Online Presence
- Build Financial Base

#### B. The Next Phase Future (Next 2 – 5 Years)

- Secure Major Contracts, Grow capacity, capability and portfolios.
- Develop Brand and Consolidate Position
- Improve Bottom-line
- Create Systems for Improvement Performance and Re-invention
- Shareholder and Clan Investment companies support
- Plan and design Expansion strategies

#### C. The True Future (6 – 10 Years and Beyond)

- Expansion & Diversification
- Innovation and Disruptive Takeovers
- Community Responsibilities (SIPP)
- Continue Shareholder and Clan Investment support

- Going into Finance and IT domains
- Consultancy Space and Adding Value

There are myriads of specific and general action items. The targets are also not specifically identified but focus areas are set out here for clear guidance and direction.

The general outlook and future of this company looks bright and promising with the backing of the Mine and the Government, as long as it is well managed and corporate Governance is solid.

## The Company's Business Relations

PBLDC has just started and hopes to establish business relationships with the following entities and organizations.

1. K92 Mining Inc. – Operator of Kainantu Gold Mine and holding interests in the Kainantu mineral rights property
2. MRA (Mineral Resources Authority) – Mining Industry Regulator
3. National Government – NEC & Parliament
4. Eastern Highlands Provincial Government – Partner Beneficiary in Kainantu Gold Mine
5. Bilimoia Landowners Association – Ore body Landowners political mouth piece.
6. Associated Landowners Association – Other Landowners apart from Bilimoia, their political mouth piece.
7. CWC – Pomasi Central Working Committee, the setup that identifies and approves Pomasi Business Spin-Off Participation in Kainantu Gold Mine.
8. Other Landowner Companies such as BILDEVCO, etc.
8. JV Partners
9. Investors
10. Contractors
11. Other Companies & Business Houses

These entities and organizations are within the immediate circle of client/Customer relationship bracket.

## Contact Us

Thanks for noting and please contact us for further information or clarification. Call mobile numbers **7337 4499** or **7852 2253** or **7294 2331** for an immediate response.

Our Addresses:

Barandane Village, Kainantu Mine Site, Kainantu District, EHP (Site Office – TBA)  
PO Box 5013. LAE 411, Morobe Province, Papua New Guinea

Mobile: 7294 2331

Email: [info@pbldc.com.pg](mailto:info@pbldc.com.pg)

Pomasi Blue Lake Development Corporation Ltd, P O Box 5013, Lae, 411, Morobe Province, Papua New Guinea.

Mobile: 7294 2331 / 7852 2253, E-mail: [info@pbldc.com.pg](mailto:info@pbldc.com.pg), Located @ Barandane Village, Gate 31 Access Road, Kainantu Mine Site, Kainantu District, Eastern Highlands Province, Papua New Guinea.

Website: [www.pbldc.com.pg](http://www.pbldc.com.pg)

Or Visit our Webpages on: [www.Linkedin.com](http://www.Linkedin.com) or [www.Facebook.com](http://www.Facebook.com)

This Company Information Sheet is endorsed by the Board of Directors of **Pomasi Blue Lake Development Corporation (PBLDC) Ltd** for dissemination. The Board Members being: Mr. Aro Kake (Chairman), Mr. John Konga (Deputy Chairman), Mr. Konni Nime (Director), Mr. Kima Aro (Director) and; Mr. Erot Kuime (Director).

Authorized for Release by:

Mr. Aro Kake  
Chairman of Board of Directors  
Pomasi Blue Lake Development Corporation (PBLDC) Ltd.  
Barandane Village – Kainantu Mine Site

[ Manager On site: Mr. John B. Konga, MBE, MBA, ]

**Disclaimer:**

The information in this CIS as of 22 January, 2026 must be confirmed before any action is taken. PBLDC will not be responsible for any liability as a result of outdated or unconfirmed information (as some information and situations are subject to change at any time without the knowledge or efforts of PBLDC).

## Appendix

1. IPA Certificate
2. IRC TIN Certificate
3. CWC Endorsement and Support – Addressed to *Pomasi Numpari Holdings* which was the initial name adopted at the conception phase. During registration, PNGIPA advised for name change twice (2 x) which eventually resulted in it being named *Pomasi Blue Lake Development Corporation Limited*.
4. 4 x Clan Leaders Approval and Authorization for creation of company – at that time was the same initial name adopted.



INDEPENDENT STATE OF  
PAPUA NEW GUINEA

*Companies Act 1997*

Sections 14 & 442

**Certificate of Incorporation**

**POMASI BLUE LAKE DEVELOPMENT CORPORATION LIMITED**

**1-143058190**

This is to certify that

**POMASI BLUE LAKE DEVELOPMENT CORPORATION LIMITED**

was incorporated under the *Companies Act 1997*

on 24 September, 2025

Given under my hand and seal on 24 September, 2025



**David A. KIL**  
**Registrar of Companies**

The validation code for the Certificate of Incorporation is CO-0759482. To check the validity of this certificate enter <https://www.ipa.gov.pg/Corp/Verify.aspx?entityNumber=1-143058190&code=CO-0759482> in your browser.



PNG INTERNAL REVENUE COMMISSION

# TAXPAYER REGISTRATION CERTIFICATE

Taxpayer Identification Number: 5029951938

Name of Business/Individual: POMASI BLUE LAKE DEVELOPMENT CORPORATION LIMITED

Trading As: POMASI BLUE LAKE DEVELOPMENT CORPORATION LIMITED

Registered Address: P O Box 5013

Lae 2411, Morobe Province  
Papua New Guinea

Nature of Business /

QUARRYING

Individual Situation:

Lae Tax Office

Issuing Authority:

Date of issuance: November 03, 2025

This certificate represents the sole and only registration as a taxpayer and supersedes all prior registration documentation.

The taxpayer is responsible for notifying the Internal Revenue Commission of any changes to the above information.

SEAL OF ISSUING AUTHORITY



Certificate Number: 168158238



\* 1 6 8 1 5 8 2 3 8 \*



## POMASI CENTRAL WORKING COMMITTEE

P.O. BOX  
KAINANTU 443  
EASTERN HIGHLANDS PROVINCE  
Phone: (675) 71390754 / 78982490  
Email:

Date 27/07/025

THE MANAGEMENT – CONTRACT DEPARTMENT  
K92 MINING LIMITED  
P.O. BOX 1290  
LAE 411  
MOROBE PROVINCE

### **Ref: SPIN-OFF CONTRACT ENDORSEMENT**

This Official Endorsement Document is to recommend to your attention this Contractor POMASI NUMPARI HOLDINGS (PMH) LIMITED

For any Spin-Off Contract/Sub-Contract Opportunities that may best suits its qualification and expertise in rendering its service to K92 Mine.

We the POMASI CWC officially endorsed this said CONTRACTOR to be considered in a respective field within the mine site upon its interest.

We (CWC) are glad to provide additional information if only when requested.

Regards,  
CWC POMASI

  
AFAYOI IRIKA (MR)  
Chairman - Pomasi CWC



  
STEVEN MUNEPE (MR)  
Secretary - Pomasi CWC

*A landowner organization of the Pomasi communities within the vicinity of K92 Mining Limited*



Date: 14 July, 2025

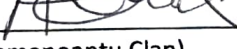
**"TO WHOM IT MAY CONCERN"**


**SUBJECT: Confirmation of Identity of Pomasi Landowners of Kainantu Gold Mine for establishment of Landowner Company – POMASI NUMPARI HOLDINGS (PNH) LIMITED**

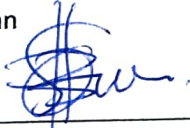
This letter is written primarily to identify members of the Pomasi Tribe, one of the key landowner groups of Kainantu Gold Mine operated by K92 Mining Inc. which comprises of four major (4) Clans wishing to engage a consultant for their Business Development efforts, re: subject.


The Central Working Committee (CWC) of Kainantu Gold Mine is the duly established body that is tasked to identify, endorse and authorize Landowners in their Business Development efforts. On this basis, our Office hereby verifies that the undersigned four (4) individuals are leaders of the four (4) respective Clans of the Pomasi Tribal group. Accordingly, we confirm that these leaders have the standing and authority to represent their people to engage experts for their Landowner business establishment.

They took the initiative to liaise and agreed to engage an experienced consultant to help them create and establish their company. Their Consultant we are informed is Mr. John B. Konga, MBE, MBA, of Lae, Morobe Province, a professional with almost 30 years of experience up to CEO level working in Government, Private Sector, and NGOs and has extensive experience in the mining industry where he established and worked with landowner companies in Porgera Gold Mine, Hidden Valley, Lihir Gold Mine, Simberi Gold Mine, and Wafi Golpu Project among others. His record gives Pomasi leaders the comfort to engage his services. Thus, they give consent to Mr. Konga to act in any capacity to further their interest and they sign below to affirm this.

1.   
Mr. Aro Kake (Kamanoantu Clan)  
Chairman

2.   
Mr. Nasuro Sevako (Unantu Clan)  
Deputy Chairman

3.   
Mr. Ben Tinkune (Noru Clan)  
Treasurer

4.   
Mr. Erot Kuime (Afuantu Clan)  
Secretary

As a part of our duty of care, we recognize these Pomasi Tribe members and hereby give our support in their efforts by confirming them as genuine members of Pomasi Tribe to establish their company and pursue their business interests in Kainantu Gold Mine.

Please do not hesitate to contact us to verify this letter. Contact me on mobile: \_\_\_\_\_

Sincerely,

  
\_\_\_\_\_

Mr. Steven Apo  
Secretary/LO Business Coordination Team Leader.

